

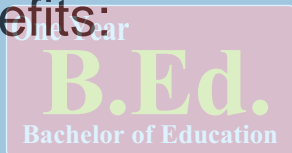
Academic Programs at Master's Level]



This is a watermark for trial version, register to get full one!

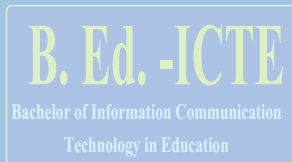
Academic Programs at Bachelor's Levels

VIP Benefits:



1. Converts the whole document.

2. No trial watermark on the output documents.



Academic Programs at +2 Levels



Remove it Now

MULTIPLE CAMPUS

- Sundarharaincha-12, Morang
- 021-545617, 021-545717
- 9852045617 (Campus Chief)
- www.sukuna.edu.np
- sukunac@yahoo.com,
sukunamc2048@gmail.com
- Notice Board: 1618021545717



"Property of SMC is a Public Asset: You Feel as if You are in Your Own Garden"
"QAA Certified Campus is the First Choice of the Students"

SMC: A Right Destination for Higher Education.



Affiliated to TU

SUKUNA

MULTIPLE CAMPUS

[Accredited by University Grants Commission(UGC) Nepal 2015]



Prospectus



अध्यक्षको तर्फबाट



केशव अधिकारी
अध्यक्ष
क्याम्पस सञ्चालक समिति

विश्वविद्यालय अनुदान आयोगबाट गुणस्तर सुनिश्चितता प्रत्यायनकृत (QAA) सुकुना बहुमुखी क्याम्पस प्रदेश नं.-१ कै गुणस्तरीय शैक्षिक केन्द्रका रूपमा स्थापित भइसकेको छ । यस क्याम्पसले शिक्षाशास्त्र, व्यवस्थापन, विज्ञान तथा मानविकी सङ्कायमा +२ देखि स्नातक तथा स्नातकोत्तर तहसम्मका कार्यक्रमहरू सफलताका साथ सञ्चालन गरी २५ वर्षे रजत महोत्सवसम्मको सुन्दर इतिहास निर्माण गरिसकेको छ । विद्यार्थीहरूको उल्लेख्य भर्ना तथा तिनीहरूले प्राप्त गरेको उपलब्धिबाट क्याम्पसको सफलता समेत पुष्टि भइरहेको छ ।

आगामी दिनहरूमा शिक्षाको स्तर अभिवृद्धि गर्नका लागि क्याम्पस अभै गम्भीर रूपमा निरन्तर लागिपरेको छ । यस क्षेत्रका विद्यार्थी, अभिभावक र सरोकरवालाहरूको माग, सुझाव र हौसलालाई सम्बोधन गर्दै विगतका त्रुटीहरूलाई सच्याउदै शैक्षिक कार्यक्रम तथा अन्य गतिविधिहरूमा अभि वढी विविधीकरण तथा प्रभावकारीता सिर्जना गरी थप प्राविधिक तथा नयाँ विषयहरू सञ्चालन गरी विश्वविद्यालयोन्मुख नमुना क्याम्पसका रूपमा यस क्याम्पसलाई विकासित गर्न सञ्चालक समिति क्रियाशील रहेको छ । यसका लागि आवश्यक भौतिक पूर्वाधारहरूको थप विकास तथा शैक्षिक कार्यक्रमहरूको सम्भाव्यता अध्ययन भईरहेको छ । यसका लागि विश्वविद्यालय अनुदान आयोगले पनि निरन्तर रूपमा सहयोग पुऱ्याउदै आइरहेको छ भने आगामी दिनहरूमा पनि यस किसिमको सहयोग लिनका लागि विश्वविद्यालय अनुदान आयोग अन्तर्गतको HERP मा क्याम्पसलाई समावेश गरी कार्यक्रम सञ्चालन भईरहेको यथार्थ पनि सबैमा जानकारी गराउन चाहन्छौ ।

अन्त्यमा यस क्याम्पसमा गुणात्मक शिक्षा सञ्चालनमा प्रेरणा प्रदान गर्नुहुने अभिभावक, त्रि.वि. र मातहतका डीन कार्यालय, विश्वविद्यालय अनुदान आयोग, प्राध्यापक एवम् कर्मचारी तथा निष्ठावान विद्यार्थीहरूमा हार्दिक आभार प्रकट गर्दै क्याम्पसको विकास तथा उन्नतिकालागि दृढताका साथ निरन्तर लागि रहने प्रतिवद्धता व्यक्त गर्दछु ।

Message from Campus Chief



Right Choice for Higher Education

It is my pleasure to welcome at Sukuna Multiple Campus (SMC). I hope you can find easy way to learn to meet your learning interest here. Founded with the commitment of quality for higher education 27 years ago to meet the local interest, SMC has undergone to an appropriate degree of transformation to meet the national and international goals of higher education. In this occasion, I warmly invite all of you who are in pursuit of a right place for higher education in Management, Education, Science and Technology and Humanities and Social Sciences. No doubt, we are a community of learners, working together to prepare young people for tomorrow's world providing them with exciting and engaging learning experiences. Confidently, I assure you that you will experience our outstanding academic setting, and a welcoming environment where all students can have admission without slightest doubt in mind.

We work with right reflection. We have surveyed our graduates that have shown that SMC alumni normally get reasonable placements or jobs, and successfully play leading roles in whichever walk of life they choose. Needless to overstate, SMC is gradually becoming the first and right choice of the young students seeking to explore their career goals with higher achievements. If you wish to do well in life, be confident SMC is a choice you will treasure for higher education.

Warm regards,
Chandra Mani Rai
Campus Chief

Message of Assistant Campus Chiefs

वि. स. २०४८ सालमा स्थापना भएको सुकुना बहुमुखी क्याम्पस प्रदेश नं. १ को एक उत्कृष्ट सामुदायिक क्याम्पस हो। समुदायमा आधारित यो क्याम्पस विश्व विद्यालय अनुदान आयोग नेपालबाट गुणस्तर सुनिश्चितता प्रत्यायनकृत Quality Assurance and Accreditation (QAA) अब्बल संस्था हो।

यस शैक्षिक संस्थाबाट उत्पादन भएको जनशक्ति देशका विभिन्न स्कुल, कलेज, वित्तीय सङ्घ संस्थामा बाक्लै भेट्न सकिन्छ। त्यसैगरी निजामती सेवा, सेना, प्रहरी लगायतका सरकारी र गैह्र सरकारी सङ्घ संस्था स्थानीय तह, प्रदेश संसद, संघीय संसदसम्म यस क्याम्पस बाट उत्पादित जनशक्ति पुगेका छन्। सबैको आकर्षणको केन्द्र बनेको यस सामुदायिक क्याम्पसमा समयको माग अनुसारको शैक्षिक कार्यक्रमहरू सञ्चालनमा छन्। यस क्याम्पसलाई विश्वास गरेर अध्ययन गर्न आउनुहुने सम्पूर्ण विद्यार्थीहरूलाई हार्दिक स्वागत गर्दै तपाईंको सेवा सुविधामा ध्यान दिदै नयाँ प्रविधिको समेत प्रयोग गरी गुणस्तरीय शिक्षा प्रदान गर्ने हाम्रो प्रयासमा तपाईंको समेत साथ रहने आशा एवम् विश्वास व्यक्त गर्दछौं। तपाईं हामी मिलेर यस क्याम्पसको गुणस्तर बृद्धि गर्दै १ नं. प्रदेश को सर्वोत्कृष्ट शैक्षिक गन्तव्य बनाउन सफल होऔं भन्ने शुभकामना व्यक्त गर्न चाहन्छौं।



केशवराज भट्टराई
सहायक क्याम्पस प्रमुख
(बेलुकी सत्र)



अर्जुनराज अधिकारी
सहायक क्याम्पस प्रमुख
(बिहानी सत्र)



मेघनारायण श्रेष्ठ
सहायक क्याम्पस प्रमुख
(दिवा सत्र)



Welcome notes from Program Co-ordinators

Dear all,

On behalf the Faculty of Management and Science, we heartily welcome you with great pleasure and excitement.

The departments have been fully committed to make facilities and faculty even stronger. We organize classes as per the situational reality, best use of the teacher performance, unbiased assessment, and utilization of student demand and adaptation of the worldly updates academic practices. We nurture your experiences and attempts are made to provide rich academic environment to the fullest. As extent coordinators, we fully assure you that the coordination centres of the program will leave no stone unturned to satisfy the gradutors to develop knowledge and skill required to the nation and to the world. We invite you to be a part of our program and achieve excellence in your choice.



Balaram Pokhrel
Program Co-ordinator
Faculty of Management



Indra Timsina
Program Coordinator
Faculty of Science & Technology



Knowing About Us

Established in public initiation in 1992 (2048 B.S.), and located in 'Sundarharaincha Municipality ward No-12, Morang', Province No.1; Sukuna Multiple Campus (SMC) is a community campus in eastern Nepal. It is wholly dependent on public blessing and their contribution. By this reason too, its tie with the community is strong enough to gain affection and affiliation. By its academic performance for quality, it has been ranked as one of the top profiled colleges in Nepal as per the classification made by University Grants Commission (UGC), Nepal.

This campus is set up with almost all fundamental requirements of any academic institution. It is almost strong enough with its physical and academic infrastructures resulting to be, perhaps, one of the most visiting higher education institutions in Nepal outside Kathmandu Valley.

["Peacefulness of Mind for academic Success"]

Essentially, this campus area is compounded covering most of its land along with the enhancement of security to make all the students feel that the environment for learning is peaceful and they are fully secured to meet the campus motto "Peacefulness' in mind for academic success". So, it can be assured that you can feel peace in mind when you step into the campus environs.

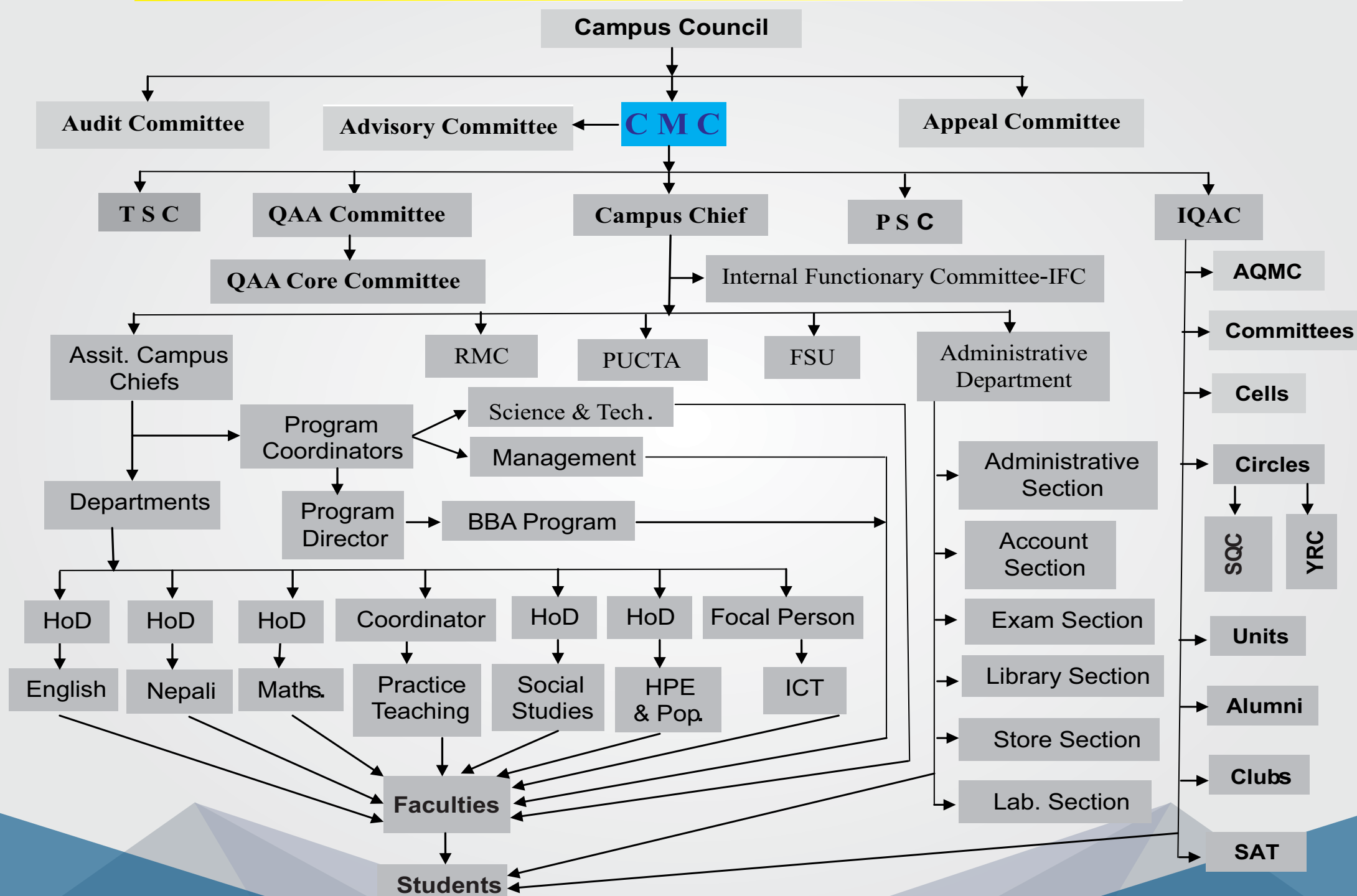
When one goes on observing this campus, she/he can see four buildings, viz. 'Teaching Building', Science Building, Administrative Building, Free Student Union, and Campus Canteen (Cafeteria). A north-fronted east-west directed building consisting of 32 reading rooms is known as 'Teaching Building' which is primarily designed for the purpose of teaching with the ample availability of comfortable desks, benches, fans on the ceiling and whiteboards on the wall in each room along

with the adjustment of CC cameras. Classrooms are furnished with comfortable chairs and multimedia –based set up in the classroom.

Two other buildings fronted to the east are Science Building (Southern one) and Administrative Building (Northern one) respectively. The southern section of the administrative building is a library with spacious reading rooms. Two more additional buildings set up within the campus space are 'Building of Free Student Union' (FSU) and a 'Campus Canteen'. A well-paved walking path to get to the buildings is fully made picturesque by flowering garden on both sides of the walking path and flora and fauna at the centre. Students can entertain with the view of the architecture of the Memorial Pillar and the Pillar of Silver Jubilee Memorial at the heart of the campus. Separate spaces are provisioned for Motorcycle stand, cycle stand, play ground, basket ball court, TT Board and First Aid Service in the campus.



Organogram of Sukuna Multiple Campus, Sundarharaincha, Morang



Our Core Values

As a public institution, SMC embraces the belief that "no less but to the maximum of access to high quality educational opportunities to the graduates". With this philosophy, SMC shares the following core values to all who are interested to know about this institution:

- ❖ Academic Excellence
- ❖ Open Exchange of Ideas
- ❖ Promotion of Diversity and Inclusiveness
- ❖ Optimum Use of Technology
- ❖ Technology Oriented Academic Programs
- ❖ Student Scholarship
- ❖ Leading to Research Projects
- ❖ Competent in Cooperation
- ❖ Community Support and Belongingness



Features of SMC

- High profiled skilled trained teaching staff with excellent teaching performance.
- Affordable fee structure.
- Sophisticated, techno-friendly, multimedia-equipped smart class management and presentation.
- Air-conditioned (AC) classrooms to the focused streams and classes.
- Annual Academic Calendar-based planned campus activities, teaching and internal tests
- Science and Computer laboratories with adequate equipments, chemicals, devices and computers for practical works.
- Availability of bus transportation for the students.
- Regular news and notice updates of the campus through campus website (www.sukuna.edu.np) and notice-board service

- Automated-Open accessed library facilities (Research library, Reading library, Departmental library and E-library).
- Additional classes for the needy students.
- Sports events and frequent extra-curricular activities for personality development.
- Graduation events for the pass out graduates.
- Quality Assurance Accreditation (QAA) as a quality brand.
- Research Management Cell (RMC) for research facilities and activities for both teachers and students.
- Ample opportunities for scholarships and freeship.
- Provision of guest lecturers for the focused streams and groups.
- Job placement, guidance and counseling.
- Academic visits and tours for students and

teachers.

- Well-managed check-in and checkout security.
- CC camera surveillance in all rooms and campus spaces.
- Facilities for the utilization of high speed Internet browsing and Wi-Fi in and outside the classroom.
- Purified advanced drinking water facility
- Scenic view of the campus
- Advanced record keeping system with software installation in each sections
- First Aid Service in the campus
- Graduate tracing
- Transparency and good governance as a campus motto
- Sanitized food, snacks and tea service in the canteen
- Parking facilities to the teacher-student vehicles.

Eligibility criteria for admission

- The applicants should have a Bachelor's degree in management/commerce or related discipline from Tribhuvan University or any other university recognized by TU.
- Eligible candidates should fill the Common Management Admission Test (CMAT) form and submit to the college administration and should appear in CMAT test as scheduled by the FOM, TU.
- Passing entrance test is a must to have admission.
- Each candidate on getting through the entrance test is called for interview.
- The result for admission is published on the basis of weighted average marks of the entrance test, interview.

**Course details for
MBS (Master of Business Studies)**
First Semester

MKT 511:	Marketing Management	3 Cr. Hrs
ECO 512:	Managerial Economics	3 Cr. Hrs
MSC 514:	Statistical Methods	3 Cr. Hrs
MGT 515:	Organizational Behavior	3 Cr. Hrs
MGT 519:	Managerial Communication	3 Cr. Hrs

Second Semester

ACC 517:	Management Accountancy	3 Cr. Hrs
FIN 510:	Financial Management	3 Cr. Hrs
MGT 513:	Human Resource Management	3 Cr. Hrs
MGT 518:	Business Environment in Nepal	3 Cr. Hrs
MSC 516:	Production and Operations Management	3 Cr. Hrs

Third Semester

ACC 519	Accounting for Financial and Managerial Decision and Control	3 Cr. Hrs
MSC 521	Research Methodology	3 Cr. Hrs
MGT 522	International Business	3 Cr. Hrs
MGT 524	Entrepreneurship	3 Cr. Hrs

Specialization Course (Any One from Group A) Elective**Finance**

FIN 687	Financial Derivatives and Market	3 Cr. Hrs
FIN 688	Corporate Finance	3 Cr. Hrs

Accountancy

ACC 685	Corporate Taxation	3 Cr. Hrs
ACC 686	Cost Management	3 Cr. Hrs

Management

MGT 687	Recent Trends in Management	3 Cr. Hrs
MGT 688	Organizational Theory	3 Cr. Hrs

Marketing

MKT 691	Advertising and Promotion Management	3 Cr. Hrs
MKT 692	Rural Marketing	3 Cr. Hrs

Fourth Semester

MGT 523	Strategic Management	3 Cr. Hrs
Specialization Courses (Any Two from Group B)		
FIN 685	Financial Markets and Institutions	3 Cr. Hrs
FIN 686	International Financial Management	3 Cr. Hrs
FIN 689	Investment Management	3 Cr. Hrs
FIN 690	Insurance: Theory and Practice	3 Cr. Hrs
FIN 691	Commercial Bank Management: Theory and Practice	3 Cr. Hrs

Marketing

MKT 685	Consumer Behavior	3 Cr. Hrs
MKT 686	International Marketing	3 Cr. Hrs
MKT 687	Brand Management	3 Cr. Hrs
MKT 688	Sales Management	3 Cr. Hrs
MKT 689	Retail Management	3 Cr. Hrs
MKT 690	Services Marketing	3 Cr. Hrs

Accountancy

ACC 687	Contemporary Auditing	3 Cr. Hrs
ACC 688	Accounting Theory and Financial Reporting	3 Cr. Hrs
ACC 689	Management Control Systems	3 Cr. Hrs
ACC 690	Balance Scorecard: Tool for Performance Measurement	3 Cr. Hrs

Master of Education (M.Ed.) Program

Eligibility Criteria For M. Ed.

- Candidates who have passed the entrance test run by the Bachelor's Degree from their related specialization subject can sit in the entrance test.
- Students/ Candidate from other university (other than TU) recognized by TU must submit their original documents.
- The candidates must have passed
- the entrance test run by the campus & the dean's office, T.U.
- Students from any subject background at Bachelor's Level or One Year B.Ed. can appear in the entrance test for EPM and Curriculum.

First Semester

Core Course		
Ed 511	Foundations of Education	3 cr.hrs.
Ed. 513	Advanced Educational Psychology	3 cr.hrs.
English Specialization		
Eng.Ed 515	Phonetics and Phonology	3 cr.hrs.
Eng.Ed. 516	English Usage and Use	3 cr.hrs.
Eng.Ed. 517	Interdisciplinary Readings	3 cr.hrs.
Eng. Ed. 518	Second Language Acquisition (SLA) Theories and Research	3 cr.hrs.
Nepali Specialization		
नेपा.शि.५१५	भाषाविज्ञान	3 cr.hrs.
नेपा.शि.५१६	नेपाली आख्यान र नाटक	3 cr.hrs.
नेपा.शि.५१७	पूर्वीय र पश्चात्य समालोचना	3 cr.hrs.
नेपा.शि.५१८	प्रायोगिक भाषा विज्ञानका प्रमुख क्षेत्र	3 cr.hrs.
Educational Planning and Management (EPM)		
Ed.PM.515	Planning Education for Change	3 cr.hrs.
Ed.PM.516	Theories of Educational Management and Leadership	3 cr.hrs.
Ed.PM.517	Educational Administration and Supervision	3 cr.hrs.
Ed.PM.518	Organizational Behaviour in Education	3 cr.hrs.
Mathematics Specialization		
Math.Ed. 515	Foundation of Mathematics Education	3 cr.hrs.
Math.Ed. 516	Abstract Algebra	3 cr.hrs.
Math.Ed. 517	Mathematical Statistics	3 cr.hrs.
Math.Ed. 518	History of Mathematics	3 cr.hrs.

Health Education		
H. Ed. 515	Advanced Health Education	3 cr. hrs.
H. Ed. 516	Fundamentals of Epidemiology	3 cr. hrs.
H. Ed. 517	Human Sexuality and Reproductive Health Education	3 cr. hrs.
H. Ed. 518	Health Promotion	3 cr. hrs.
Population Education		
Pop. Ed. 515	Advanced Population Education	3 cr. hrs.
Pop. Ed. 516	Advanced Demography	3 cr. hrs.
Pop. Ed. 517	Demographic Measures and Techniques	3 cr. hrs.
Pop. Ed. 518	Sexual and Reproductive Health Education	3 cr. hrs.

Second Semester

Ed 521	Curriculum Practices	3 cr.hrs.
Ed. 522	Education and Development	3 cr.hrs.
English Specialization		
Eng.Ed 525	Linguistics in Application	3 cr.hrs.
Eng.Ed. 527	Critical Discourse Analysis (CDA)	3 cr.hrs.
Eng.Ed. 528	Readings in English Part-- I	3 cr.hrs.
Eng. Ed. 529	Language, Society and Power	3 cr.hrs.
Nepali Specialization		
नेपा.शि.५२४	भाषिक परीक्षण	3 cr.hrs.
नेपा.शि.५२५	नेपाली कविता काव्य	3 cr.hrs.
नेपा.शि.५२६	आधुनिक नेपाली निबन्ध र समालोचना	3 cr.hrs.
नेपा.शि.५२९	सामाजिक तथा मनो-भाषाविज्ञान	3 cr.hrs.
Educational Planning and Management (EPM)		
Ed.PM.525	Recent Trends in Educational Planning and Management	3 cr.hrs.
Ed.PM.527	Educational Management Information System (EMIS)	3 cr.hrs.
Ed.PM.528	Educational Resource Management	3 cr.hrs.
Ed.PM.529	Theory and Practices of Non Formal Education	3 cr.hrs.
Mathematics Specialization		
Math.Ed. 525	Trends in Mathematics Education	3 cr.hrs.
Math.Ed. 526	Linear Algebra	3 cr.hrs.
Math.Ed. 527	Projective Geometry	3 cr.hrs.
Math.Ed. 528	Complex and Numerical Analysis	3 cr.hrs.

Health Education		
H. Ed. 526	Nutrition Education	3 cr.hrs.
H. Ed. 527	Community Health	3 cr.hrs.
H. Ed. 528	Community Organizing for Health Education	3 cr.hrs.
H. Ed. 529	Health Promoting Schools	3 cr.hrs.
Population Education		
Pop. Ed. 526	Quality of Life Education	3 cr.hrs.
Pop. Ed. 527	Indirect Techniques for Population Analysis	3 cr.hrs.
Pop. Ed. 528	Population Planning and Management	3 cr.hrs.
Pop. Ed. 529	Population and Development	3 cr.hrs.
Third Semester		
Ed. 532	Research Methodology in Education	3 cr.hrs.
Ed. 533	Measurement and Evaluation in Education	3 cr.hrs.
English Specialization		
Eng.Ed 535	English Language Teaching (ELT) Pedagogy and Materials	3 cr.hrs.
Eng.Ed. 536	Readings in Literary Genres	3 cr.hrs.
Eng.Ed. 538	ELT Research and Testing	3 cr.hrs.
Eng. Ed. 539	Dimensions of Teacher Development	3 cr.hrs.
Nepali Specialization		
नेपा.शि.५३५	नेपाली भाषा शिक्षण	3 cr.hrs.
नेपा.शि.५३७	भाषिक अनुसन्धान विधि	3 cr.hrs.
नेपा.शि.५३८	भाषाविज्ञानका प्रमुख सिद्धान्त	3 cr.hrs.
नेपा.शि.५३९	भाषिक विद्या शिक्षण	3 cr.hrs.
Educational Planning and Management (EPM)		
Ed.PM.536	Financing of Education	3 cr.hrs.
Ed.PM.537	Managing Diversities in Education	3 cr.hrs.
Ed.PM.538	School Management	3 cr.hrs.
Ed.PM.539	Social Justice Education	3 cr.hrs.
Mathematics Specialization		
Math.Ed. 535	Teaching Undergraduate Mathematics	3 cr.hrs.
Math.Ed. 537	Differential Geometry	3 cr.hrs.
Math.Ed. 538	Measure Theory and Topology	3 cr.hrs.
Math.Ed. 539	Studies in Mathematics Education	3 cr.hrs.
Health Education		
H. Ed. 535	Instructional Technology in Health Education	3 cr.hrs.
H. Ed. 537	Seminar in Issues of Health and Health Education	3 cr.hrs.
H. Ed. 538	Applied Health Education Research	3 cr.hrs.
H. Ed. 539	Health Education Planning and Management	3 cr.hrs.

	Population Education		
Pop. Ed. 535	Technology of Teaching Population Education		3 cr.hrs.
Pop. Ed. 537	Seminar in Issues of Population Education		3 cr.hrs.
Pop. Ed. 538	Applied Research in Population Education		3 cr.hrs.
Pop. Ed. 539	Population of Nepal		3 cr.hrs.
	Fourth Semester		
Ed 541	Contemporary Educational Issues		3 cr. hrs.
Ed. 544	Thesis Writing (Specialization/Specific)		6 cr. hrs.
Ed.542	Practicum in Special Needs Education(EPM)		3 cr.hrs.
Ed.542	Teaching Practice		3 cr.hrs.
English Specialization (Only one Subject from this Group)			
Eng.Ed 546	English Language Teaching (ELT) Curriculum and Syllabus Designing	Only One Subject	3 cr.hrs.
Eng.Ed. 547	Translation Studies (Elective)		3 cr.hrs.
Eng.Ed. 548	Academic Writing (Elective)		3 cr.hrs.
Eng. Ed. 549	ELT Seminar and Report Writing (PR)		3 cr.hrs.
Nepali Specialization			
नेपा.शि.५४५	भाषिक सम्पादन कला (सैद्धान्तिक २ + प्रयोगात्मक १)	एक विषय मात्र	3 cr.hrs.
नेपा.शि.५४६	ऐतिहासिक भाषाविज्ञान र नेपाली भाषा (इच्छाधीन १)		3 cr.hrs.
नेपा.शि.५४७	कोशविज्ञान (इच्छाधीन २)		3 cr.hrs.
नेपा.शि.५९८			3 cr.hrs.
Educational Planning and Management (EPM)			
Ed.PM.545	Monitoring, Evaluation and Research in Planning and Management	Only One Subject	3 cr.hrs.
Ed.PM.546	School Culture and Change		3 cr.hrs.
Ed.PM.548	Contemporary Issues in Educational Planning and Management		3 cr.hrs.
Mathematics Specialization			
Math.Ed. 546	Operation Research	Only One Subject	3 cr.hrs.
Math.Ed. 547	ICT in Mathematics Education		3 cr.hrs.
Health Education			
H.Ed. 546	(Elective)Health Psychology	Only One Subject	3 cr.hrs.
H.Ed. 547	(Elective)Physical Exercise and Sports for Health Promotion (2 Th and 1 Pr)		3 cr.hrs.
Population Education			
Pop. Ed. 546	Population and Environment (Elective)	Only One Subject	3 cr.hrs.
Pop. Ed. 547	Public Health (Elective)		3 cr.hrs.

Bachelor of Business Studies**Eligibility criteria for admission**

The candidate applying for admission to the BBS programme:

1. Must have successfully completed the 10+2 in business/ commerce or an equivalent course from a National Education Board or from Tribhuvan

University or from other University/ Board recognized by T.U or must have studied mathematics or economics as a full paper at the 10+2 programme.

2. Must have studied English as a full paper at the 10+2 or equivalent programme.
3. Must have secured the minimum marks at

the 10+2 or equivalent programme as prescribed by the Faculty Board or campus concerned.

4. Must satisfy any other entry requirements or criteria as prescribed by the Faculty Board or the campus.

First Year

MGT 201	Business English	100 Th.
MGT 202	Business Statistics	100 Th.
MGT 203	Microeconomics	100 Th.
MGT 211	Accounting for Financial Analysis	100 Th.
MGT 213	Principles of Management	100 Th.

Second Year

MGT 205	Business Communication	100 Th.
MGT 206	Macroeconomics	100 Th.
MGT 212	Cost and Management Accounting	100 Th.
MGT 214	Fundamentals of Marketing	100 Th.
MGT 216	Foundations of Human Resource Management	100 Th.

Third Year

MGT 204	Business Law	100 Th.
MGT 215	Fundamentals of Financial Management	100 Th.
MGT 217	Business Environment and Strategy	100 Th.
MGT 218	Taxation and Auditing	100 Th.
MGT 219	Organizational Behavior	100 Th.

Fourth Year: In the fourth year, the students are encouraged to focus on a particular functional and concentration area of business studies. Building on the foundation laid in the first, second and third years, the principal mission of the fourth year twofold: 1) To enable the students to concentrate in one functional areas of business. FOM offers three stream of concentration courses:

a) Account b) Finance c) Marketing

2) To provide opportunity to students to engage in research and final project presentation.

MGT 220	Entrepreneurship and Enterprise Development	100 Th.
	Concentration I	100 Th.
	Concentration II	100 Th.
	Concentration III	100 Th.
MGT 221	Business Research Methods	50 Th.
MGT 401	Final Project	50 Pr.

Concentration Courses - Finance Specialization

FIN 253	Fundamentals of Investment	100 Th.
FIN 252	Foundations of Financial Markets and Institutions	100 Th.
FIN 250	Fundamentals of Corporate Finance	100 Th.

Concentration Courses - Marketing Specialization

MKT 250	Fundamentals of Selling	100 Th.
MKT 253	Fundamentals of Advertising	100 Th.
MKT 254	Fundamentals of Services Marketing	100 Th.

Concentration Courses - Account Specialization

ACC 252	Advanced Financial Accounting	100 Th.
ACC 253	Advance Auditing	100 Th.
ACC 254	Budgeting and Controlling of Profit	100 Th.

(B.Sc.)

Bachelor of Science and Technology

Eligibility for Admission

Candidates deemed eligible by Trivuwan University and those who passed the entrance exam conducted by the dean's Office (Science and Technology) will be considered qualified for admission.

Course Details for B.Sc.

B.Sc. First Year

Theoretical			Theoretical	
Course Title	Subject Code	Full Marks	Subject Code	Full Marks
Physics (Mechanics, Thermodynamics and statistical physics electricity and magnetism)	Phy. 101	100	Phy. 102	50
Analytical Geometry and Vector analysis	Math 102	75
Non-Chordata and protochordata	Zool 101	100	Zool 102	50
Plant Diversity	Bot 101	100	Bot 102	50
Basic Chemistry I	Chem 101	100	Chem 102	50
Calculus	Math 101	75
Scientific Communication	Sc 101	50

B.Sc. Second Year

Theoretical			Theoretical	
Course Title	Subject Code	Full Marks	Subject Code	Full Marks
Plant structure function & Development	Bot201	100	Bot202	50
Algebra I	Math201	75		...
Chordata, comparative Anatomy and Evolution	Zool201	100	Zool 202	50
Basic Chemistry	Chem201(Major)	100	Chem202	50
Differential Equations	Math202	75	
Optics, Modern physics Electronics	Phy201(Major/Minor)	100	Phy 202	50
Applied Statistics (Compulsory)	Appd-stat201	50	

B.Sc. Third Year

Theoretical			Theoretical	
Course Title	Subject Code	Full Marks	Subject Code	Full Marks
Plant Biochemistry & Biotechnology	Bot 301	100	Bot 302	50
Medicinal and Aromatic plants (Elective)	Bot 304	50	—	-
Animal Physiology & genetics	Zool 301	—	Zool 302	50
Natural resource management (Elective)	Zool 305	—	----	-
General Chemistry I	Che 301	100	Che 302	50
Basic Biochemistry (Elective)	Che 303	50	-----	-
Research Methodology	Rm 305	80	-----	20
Mathematical Phy. & Classical. Mech.	Phy 301	100	Phy 302	50
Space Science	Phy 305	50	-----	-

B.Sc. Fourth Year

Theoretical			Theoretical	
Course Title	Subject Code	Full Marks	Subject Code	Full Marks
Quantum physics	Phy 401	100	Phy 402	50
Solid State phy. & nuclear Physics	Phy 403	100	Phy 404	50
Material Physics	Phy 405	100	-	-
Econophysics	Phy 407	50	-	-
General Chemistry-II	Che 401	100	Che 402	50
General Chemistry-III	Che 403	100	Che 404	50
Applied Chemistry	Che 405	100	-	-
Basics of Nano Science	Che 407	50	-	-
Bio. Diversity & Environment	Bot 401	-	-	-
Plant Pathology and Protection	Bot 403	-	-	-
Applied Botany	Bot 405	-	-	-
Plant and Society	Bot 407	-	-	-
Computational course	Com 408	50	-	-



The Bachelor of Business Administration (BBA) of Tribhuvan University is a special program in semester system of Tribhuvan University, designed to develop socially responsive, creative, and result oriented management professionals to fill up the middle level managerial positions in the rapidly growing business sector in Nepal and abroad.

In Sukuna Multiple Campus teaching learning under this program began from 2018 with the affiliation of Tribhuvan University with special emphasis. This program is considered as one of the emerging quality focused programs of the campus.

Eligibility for BBA

The candidate applying for admission to the BBA program of Tribhuvan University must have:

- i) Students who have passed 10+2 or equivalent examinations from recognized academic institute with second division (securing 45% and above) or 1.8 CGPA are eligible to enroll in this program.
- ii) successfully completed a twelve-year schooling or its equivalent from any university, board or institution recognized by Tribhuvan University.
- iii) Eligible applicants are required to appear in the entrance test commonly known as Central Management Admission Test (CMAT) conducted by the Faculty of Management. The test will follow the international testing pattern and standards
- iv) There shall be altogether one hundred (100) objective questions in the CMAT containing twenty (25) questions in each section with a total weight of 100 marks.
- v) Student must secure a minimum of 40% in the CMAT.
- vi) Applicants securing above cut off point marks in the CMAT will be short-listed by the FOM, TU. Only short listed candidates will be selected for admission.

Course Details:

First Semester		Cr. Hrs.
ENG 201:	English-I	3 Cr. Hrs
GT201:	Principle of Management	3 Cr. Hrs
ECO 201:	Micro Economics	3 Cr. Hrs
MTH 201:	Business Mathematics-I	3 Cr. Hrs
ITC 201:	Computer and Information Technology Applications	3 Cr. Hrs

Second Semester		Cr. Hrs.
ENG 202:	English-II	3 Cr. Hrs
MGT 202:	Human Resource Management	3 Cr. Hrs
ECO 202:	Macro Economics	3 Cr. Hrs
MTH 202:	Business Mathematics -II	3 Cr. Hrs
ITC 202:	Introductory Data base	3 Cr. Hrs

Third Semester		Cr. Hrs.
ENG 303:	Business Communication	3 Cr. Hrs
STT 201:	Statistics	3 Cr. Hrs
ACC 201:	Financial Accounting	3 Cr. Hrs
FIN 201:	Business Finance	3 Cr. Hrs
ITC 203:	Management Information System	3 Cr. Hrs

Fourth Semester		Cr. Hrs.
MGT 204:	Business Law	3 Cr. Hrs
MGT 206:	Business Environment In Nepal	3 Cr. Hrs
ACC 202:	Cost and Management Accounting	3 Cr. Hrs
PSY 201:	Psychology	3 Cr. Hrs
MTT 201:	Fundamentals of Marketing	3 Cr. Hrs

Fifth Semester		Cr. Hrs.
MGT 207:	International Business	3 Cr. Hrs
FIN 202:	Basic Financial Management	3 Cr. Hrs
MGT 205:	Operation Management	3 Cr. Hrs
SOC 201:	Sociology for Business	3 Cr. Hrs
ACC 203:	Corporate Taxation In Nepal	3 Cr. Hrs

<u>Sixth Semester</u>		Cr. Hrs.
RCH 201:	Business Research Methods	3 Cr. Hrs
MGT 203:	Organizational Behavior	3 Cr. Hrs
SOC 202:	Nepalese Society and Politics	3 Cr. Hrs
MGT 210:	Entrepreneurship	3 Cr. Hrs
TC 206:	E-Commerce	3 Cr. Hrs
<u>Seventh Semester</u>		
Three Specialization Courses		Cr. Hrs.
MGT 209:	Business Ethics and Social Responsibility	3 Cr. Hrs
PRJ 350:	Summer Project	3 Cr. Hrs
<u>Eighth Semester</u>		
Three Specializations Course		Cr. Hrs.
MGT 208:	Business Strategy	3 Cr. Hrs
MGT 350:	Internship	3 Cr. Hrs



(B.Ed.) Bachelor of Education

Eligibility for Admission

Students with higher secondary Education Examination pass certificate (HSE/PC, hereafter only HSE) or proficiency certificate level of Tribhuvan University (PCL) or equivalent to HSE/Grade 12 pass are eligible for the admission in B.Ed. programme. In addition, they need other requirements for the admission in different major subject specialization areas which are as follows:

1. **Nepali Education:** HSE/Grade 12 pass or PCL with Nepali with at least 200 marks
2. **English Education :** HSE/Grade 12 pass or PCL with English or linguistics major HSE/Grade 12 pass or PCL with 50% marks in general English.

Or

Candidates with HSE/Grade 12 pass or PCL must secure 50% marks in the entrance Examination conducted by the respective department of the campuses

3. **Mathematics Education:** HSE/Grade 12 pass or PCL with mathematics major containing at least 200 marks
4. **Science Education:** HSE/Grade 12 pass or PCL with physics, Chemistry and Biology subjects with at least 100 full marks in each subject
5. **Health and physical Education:** HSE/Grade 12 pass or PCL with Health & Physical Education.

Or

HSE/Grade 12 pass or PCL with science or population or

Home science or Nursing and any other subjects.

HSE/Grade 12 pass or PCL without Health and physical Education background must pass the physical fitness related entrance test conducted by the respective department of the campuses.

The candidate without physical Disability will be eligible to study Health and physical Education.

6. **Population Education:** HSE/Grade 12 pass or PCL with population studies or Geography or Economics or Health and physical Education or Community Health or Science Education and History Education, HSEB/Grade 12 passed or PCL or its equivalent from any faculty Eligibility for selecting minor subject

Except science Education minor (Biology), minor subjects areas are opened for all students irrespective of their previous study areas in Grade 11 and 12 or PCL. Only those students who are majoring physical science can select biology minor. Students are required to select minor subject areas that should be different from their major subjects areas.

First Year
Compulsory/Core Subjects

Subjects	Code No.	F.M.
Compulsory Nepali	Nep. Ed. 401	100
General English	Eng. Ed. 411	100
Philosophical and Sociological Foundations of Education	Ed. 412	100

Major Subjects (Specialization) any two from related Subject

Subjects	Code No.	F.M.
नेपाली कथा र उपन्यास	नेपा. शि. ४१६	100
नेपाली नाटक एकाङ्की र निबन्ध	नेपा. शि. ४१७	100
Foundation of Language and Linguistics (Th. + Pr. 80+20)	Eng.Ed. 416	100
Reading Writing and Critical Thinking	Eng.Ed. 417	100
Foundation of Mathematics	Math. Ed. 416	100
Calculus-I	Math .Ed. 417	100
Chemistry I (Th. +Pr.: 80+20)	Sc.Ed. 416	100
Physics I (Th. +Pr.:80+20)	Sc.Ed. 417	100
Foundation of Health Education	Hp. Ed. 416	100
Foundation of Physical Education (Th. + Pr. 50+50)	Hp.Ed. 417	100
Foundation of Population Education	Pop.Ed. 416	100
Quality of life	Pop. Ed. 417	
Economic Analysis	Eco.Ed. 416	100
Quantitative Techniques	Eco.Ed. 417	100
Fundamentals of Ageing	Pop. Ed.445	100
Project and Seminar on Population Education	Pop. Ed.446	100

Minor subjects

(Any one from the following related to major subject area)

Subjects	Code No.	F.M.
नेपाली कथा र उपन्यास	नेपा.शि. ४१८	100
Foundation of Language and Linguistics (Th. +Pr.: 80+20)	Eng.Ed. 418	100
Biology I Animal Science (Th. +Pr.: 40+10)	Sc.Ed. 418	50
Biology I Plant Science (Th. +Pr.: 40+10)	Sc. Ed. 418	50
Foundation of Health	H.Ed. 418	100
Foundation of Population Education	Pop.Ed. 418	100
Economic Analysis	Eco.Ed.418	100
Educational Administration	Ed. PM.418	100

Second Year

Compulsory/Core Subjects		
Subjects	Code No.	F.M.
Educational Psychology	Ed. 421	100

Major Subjects (Specialization)
(Any three subjects from related specialization area)

Subjects	Code No.	F.M.
भाषाविज्ञान र नेपाली भाषा	नेपा. शि. ४२२	100
नेपाली कविता र काव्य	नेपा. शि. ४२३	100
नेपाली भाषा पाठ्यक्रम, पाठ्यपुस्तक तथा शिक्षण पद्धति	नेपा. शि. ४२४	100
Expanding Horizons in English	Eng. Ed. 422	100
English for Communication(Th. +Pr.: 80+20)	Eng. Ed. 423	100
Basics of Academic Writing	Eng. Ed. 424	100
Geometry	Math Ed. 422	100
Real Analysis	Math Ed. 423	100
The Historical Development of Mathematics	Math Ed. 424	100
Physics II (Th.+Pr.: 80+20)	Sc.Ed. 422	100
Chemistry II (Th.+Pr.:80+20)	Sc.Ed. 423	100
Mathematics for Science Education	Sc.Ed. 424	100
Fundamentals of Public Health	Hp. Ed. 422	100
Management & Supervision of Public Health and Practices	Hp. Ed. 423	100
Sports Science (Th.+Pr.: 50+50)	HP. Ed. 424	100
Population Situation of Nepal	Pop. Ed. 422	100
Population Dynamics	Pop. Ed. 423	100
Basic Environmental Education	Pop. Ed. 424	100
Nepalese Economy	Eco.Ed. 422	100
Economics for Development and Planning	Eco.Ed. 423	100
Economics of Education (Th.+Pr.:80+20)	Eco.Ed. 424	100



Minor subjects (Specialization)

(Any one from the following related to major subject area)

Subjects	Code No.	F.M.
भाषाविज्ञान र नेपाली भाषा,	नेपा. शि. ४२८	100
नेपाली कविता र काव्य	नेपा. शि. ४२९	100
English for communication (Th.+Pr.:80+20)	Eng. Ed. 428	100
Basics of Academic Writing	Eng. Ed. 429	100
Plant Science II (Th.+Pr.:40+10)	Sc. Ed. 427	50
Animal Science II (Th.+Pr.:40+10)	Sc. Ed. 428	50
Environmental Education (Th.+Pr.:80+20)	Sc. Ed. 429	100
Fundamentals of Public Health	H. Ed. 428	100
Management & Supervision of Health and Physical Education	H. Ed. 429	100
Population Situation of Nepal	Pop Ed. 428	100
Population Dynamics	Pop Ed. 429	100
Nepalese Economy	Eco.Ed.428	100
Economics for Development and Planning	Eco.Ed.429	100
Fundamentals of Educational Planning	Ed. PM. 428	100
Educational Management	Ed. PM. 429	100

Third Year

Core Subjects

Subject	Code No.	F.M.
Curriculum and Evaluation	Ed. 431	100

Major subjects (Specialization)

(Any three subjects from related specialization area)

Subjects	Code No.	F.M.
नेपाली भाषा शिक्षण	नेपा.शि. ४३२	100
प्रयोगिक भाषाविज्ञान	नेपा.शि. ४३३	100
साहित्यशास्त्र र नेपाली समालोचना	नेपा.शि. ४३४	100
English Language Teaching Methods and Practices	Eng. Ed. 432	100
Critical Reading in English	Eng.Ed. 433	100
English for Mass Communication (Th.+ Pr: 80+20)	Eng.Ed. 434	100
Teaching Mathematics at Secondary Level (Th.+Pr.:80+20)	Math Ed. 432	100
Modern Algebra	Math. Ed. 433	100
Analytical Geometry	Math. Ed. 434	100
Methods of Teaching Science (Th.+ Pr.:80+20)	Sc.Ed.432	100
Chemistry III (Th.+Pr.:80+20)	Sc.Ed. 433	100
Physics III (Th.+ Pr:80+20)	Sc.Ed. 434	100

Teaching Health and Physical Education	Hp.Ed.432	100
Environmental Health and Health Promotion	Hp.Ed.433	100
Basic Research and Project Meet in Health and Physical Education (Th.+ Pr: 50+50)	Hp.Ed. 434	100
Method of Teaching Economics	Eco. Ed. 432	100
Government Finance and Financial System	Eco.Ed.433	100
International Economics	Eco Ed. 434	100
Methods of Teaching Population Education (Th.+ Pr:80+20)	Pop. Ed. 432	100
Foundation of sexual & Rep. Health education	Pop. Ed. 433	100
Basic Research in Population Education (Th.+ Pr:50+50)	Pop Ed. 434	100

Minor subjects (Specialization) 100

(Any one from the following related to major subject area)

Subjects	Code No.	F.M.
नेपाली भाषाशिक्षण	नेपा.शि. ४३९	100
English Language Teaching Methods and Practices	Eng. Ed. 439	100
Plant ScienceIII(Th.+Pr.:40+10)	Sc. Ed. 438	50
Animal Science III (Th.+Pr.:40+10)	Sc. Ed. 439	50
Teaching Health Education	H. Ed. 438	100
Method of Teaching Economics	Eco. Ed. 439	100
Methods of Teaching Population Education	Pop.Ed.439	100
Educational Supervision	Ed. PM. 439	100

4th Year Core Subjects

Subjects	Code No.	F.M.
Teaching Practice	Ed. 440	100
Classroom Instruction	Ed. 442	100



Major Subjects(Specialization)
(Any two subjects from related specialization area)

Subjects	Code No.	F.M.
अनुसन्धान विधि : (सैद्धान्तिक र प्रयोगात्मक : ८०+२०)	नेपा.शि. ४४५	100
व्यावहारिक लेखन तथा सम्पादन : (सैद्धान्तिक र प्रयोगात्मक : ८०+२०)	नेपा. शि. ४४६	100
Research Methodology in English (Th +Pr.:50+50)	Eng. Ed. 445	100
Literature for Language Development	Eng.Ed. 446	100
Linear Algebra and Vector Analysis	Math. Ed. 445	100
Advance Calculus	Math. Ed. 446	100
Chemistry IV (Th. +Pr.:80+20)	Sc. Ed. 445	100
Physics IV (Th. +Pr.:80+20)	Sc.Ed. 446	100
School Health Programme and Community Health Survey(Th. +Pr.:50+50)	Hp. Ed. 445	100
Sports Training in Physical Education	Hp. Ed. 446	100
Fundamental of Ageing	Pop. Ed. 445	100
Project and Seminar on Population Education	Pop. Ed. 446	100
Managerial Economics and Research in Economics Education	Eco.Ed.445	100
Population Economics	Eco.Ed.446	100
Sc. Edu. ICT in Sc. Edu. (Th-50)+(Pr-50)	Sc. Ed. 444	100

Minor subjects (Specialization)
(Any one from the following related to major subject area)

Subjects	Code No.	F.M.
व्यावहारिक लेखन तथा सम्पादन : (सैद्धान्तिक र प्रयोगात्मक : ८०+२०)	नेपा.शि. ४४९	१००
Literature for Language Development	Eng.Ed.449	100
Plant Science IV (Th. +Pr.:40+10)	Sc. Ed. 448	50
Animal Science IV (Th. +Pr.:40+10)	Sc. Ed. 449	50
School Health Programme and Community Health Survey (Th. +Pr.:50+50)	Hp. Ed. 449	100
Population Economics	Eco.Ed.449	100
High School Management and Practices (Th. + Pr.:80+20)	Ed. PM. 449	100
Project Works Seminar on Proj. Education (Th. + Pr.:50+50)	Pro. Edu. 449	

One Year B.Ed. Programme

Eligibility & Admission Procedure

Candidates who have passed Bachelor's Degree from any discipline other than B.Ed. can appear in the entrance test and those who pass it can have admission in one of the following groups: Their specialization subject must be related to their previous graduation certificate.)

One Year B. Ed.

Compulsory Subject	Sub. Code	F.M.
1 Philosophical and Sociological Foundations of Education	Ed. 412	100
2 Educational Psychology	Ed. 413	100
3 Curriculum and Evaluation	Ed. 414	100
4 (a) Student Teaching	Ed. 498	100
(b) Practicum (For Education Only)	Ed. 499	100

Specialization Subjects. (Two Subjects from any related groups)

Subjects	Sub. Code	F.M.
Group 1		
Teaching Social Studies	Sost. Ed. 438	100
Methods of Teaching Economics	Eco. Ed. 490	100
Group 2		
Fundamentals of Language and Linguistics	Eng. Ed. 416	100
Method of Teaching English	Eng. Ed. 490	100
Group 3		
Educational Administration	Ed. Mgt. 412	100
Educational Supervision	Ed. Mgt. 413	100
Group 4		
Teaching Social Studies	Sost. Ed. 438	100
Method of Teaching Geography	Geog. Ed. 490	100
Group 5		
Fundamentals of Health and Health Science	H.Ed. 416	100
Method of Teaching Health	H.Ed. 490	100
Group 6		
Teaching Social Studies	Sost. Ed. 438	100
Method of Teaching History	Hist.Ed. 490	100
Group 7		
Mathematics for School Teachers	Math. Ed. 416	100
Method of Teaching Mathematics	Math. Ed. 490	100

Group 8		
सामान्य र प्रायोगिक भाषाविज्ञान	नेपा. शि. ४९६	100
नेपाली भाषाशिक्षण	नेपा.शि. ४९०	100
Group 9		
Teaching Social Studies	Sost. Ed. 438	100
Method of Teaching Political Science	Pol. Ed. 490	100
Group 10		
Population Environment and Quality of Life	Pop. Ed. 416	100
Method of Teaching Population	Pop. Ed. 490	100
Group 11		
Method of Teaching Science at Sec. School	Sc.Ed.490	100
Science Curriculum Practical Activities (Pr.)	Sc.Ed.491	100

B. Ed. ICTE- Semester System

Eligibility & Admission Procedure

- The students with minimum grade score D+ in +2 or equivalent base from any discipline are eligible to admit in Information Communication Technology in Education (ICTE), semester system run by Tribhuvan University, Faculty of Education.
- The candidates must pass the centralized Admission Test run by the Dean's Office, FOE.

First Semester(18 Credit Hours)

Subjects	Subjects Code	F.M
English Language-I	Eng. Ed. 411	100
साधारण नेपाली-१	नेपा. शि. ४९९	100
Fundamentals of Education	Ed. 411	100
Introduction of Information Technology	ICT Ed. 415	100
Programming Concept with C	ICT Ed. 416	100
Fundamentals of Mathematics	Math Ed. 415	100

Second Semester (18 Credit Hours)

Subjects	Subjects Code	F.M
English Language-II	Eng. Ed. 421	100
साधारण नेपाली-२	नेपा. शि. ४२९	100
Social Perspective in Education	Ed. 421	100
Digital Logics	ICT Ed. 425	100
Object Oriented Programming with C++	ICT Ed. 426	100
Number Theory	Math Ed. 425	100

Third Semester (18 Credit Hours)

Subjects	Subjects Code	F.M
Developmental Psychology	Ed. 431	100
ICT in Education	ICT Ed. 431	100
Data Structure and Algorithm	ICT Ed. 435	100
Microprocessor & Computer Organization	ICT Ed. 436	100
Web Technology	ICT Ed. 437	100
Calculus	Math Ed. 435	100

Fourth Semester (18 Credit Hours)

Subjects	Subjects Code	F.M
Psychology of Learning	Ed. 441	100
Operating System	ICT Ed. 445	100
Database Management System	ICT Ed. 446	100
System analysis and Design	ICT Ed. 447	100
Probability and statistics	Math Ed. 445	100
Analytic Geometry	Math Ed. 446	100

Fifth Semester (15 Credit Hours)

Subjects	Subjects Code	F.M
Fundamentals of Curriculum	Ed. 451	100
Java Programming Language	ICT Ed. 455	100
Data Communication and Networks	ICT Ed. 456	100
Software Engineering and Project Management	ICT Ed. 457	100
Numerical Analysis	Math Ed. 455	100

Sixth Semester (15 Credit Hours)

Subjects	Subjects Code	F.M
Assessment in Teaching and Learning	Ed. 461	100
Visual Programming	ICT Ed. 465	100
Computer Graphics	ICT Ed. 466	100
E-learning	ICT Ed. 467	100
Graph Theory	Math Ed. 465	100

Seventh Semester (15 Credit Hours)

Subjects	Subjects Code	F.M
Class room Pedagogy	Ed. 471	100
Network Security	ICT Ed. 475	100
Artificial Intelligence in Education	ICT Ed. 476	100
Discrete Mathematics	Math Ed. 475	100
Teaching Mathematics	Math ed. 476	100

Eight Semester (15 Credit Hours)

Subjects	Subjects Code	F.M
Research in Education	Ed. 481	100
Technology in Education	ICT Ed. 485	100
Educational Project	ICT Ed. 486	100
Algebra	Math Ed. 485	100
System Administration Using Linux	ICT Ed. 487	100
Subjects (9 Credit Hours)	Subjects Code	F.M
Practicum in ICT in Education	ICT Ed. 495	100

Bachelor of Arts (B.A.)

Eligibility Criteria

The Bachelor of Arts (B.A.) are Four years program offered by Tribhuvan University under the Faculty of Humanities and Social Sciences. Any candidates who have completed 10+ 2 or equivalent securing minimum D+ grade in all subjects of Grade 11 and 12 are eligible for admission in BA under Tribhuvan University. For admission, the campus applies the following process:

- i) Filling out entrance test form and submission to admission section.
- ii) Entrance Test administration
- iii) Entrance Test Result publication
- iv) Only entrance passed candidates can have admission in the given period of time.

Overall Distribution of Sociology Subjects for the Four Academic Year Courses for the First Year

Subjects	Code No.	F.M.
Introduction of Sociology	So 421	100
Dynamics of Nepali Society	So 422	100

Courses for the Second Year

Subjects	Code No.	F.M.
Sociological Theories	So 423	100
Research Methods in Sociology	So 424	100

Courses for the Third Year

Subjects	Code No.	F.M.
Sociology of Democracy, Diversity and Inequality	So 425	100
Program Designing and Evaluation	So 410	100

Courses for the Fourth Year

Subjects	Code No.	F.M.
Sociology of Development	So 427	100
Academic Research and writing	So 428	100

Overall Distribution of English Subjects for the Four Academic Year

Subjects	Code No.	F.M.
Reading, Writing and Thanking	Eng 421	100
History of Literature and Critical Tradition	Eng 422	100
Literature from Early Modern to Modern Period	-	100
Romantic and Victorian Literature	Eng 423	100
Modern and Post Modern Literature	Eng 424	100
Professional Communication (Elective)	Eng 410	100
Researching and Writing	Eng 425	100
World Literature in English	Eng 426	100

बी. ए. प्रथम वर्ष नेपाली विषयको पाठ्यक्रमको रूपरेखा

पाठ्यांश शीर्षक	पत्र संकेत	अङ्कभार
आधुनिक नेपाली कथा उपन्यास र नाटक क. नेपाली कथा-३५ ख. नेपाली उपन्यास-३० ग. नेपाली नाटक-३५	नेपाली ४२१	१००
आधुनिक नेपाली कसवता-काव्य क. नेपाली फुटकर कविता -५० ख. नेपाली खण्डकाव्य र महाकाव्य-५०	नेपाली ४२२	१००

बी. ए. दोस्रो वर्ष नेपाली विषयको पाठ्यक्रमको रूपरेखा

पाठ्यांश शीर्षक	पत्र संकेत	अङ्कभार
नेपाली लोक साहित्य र पूर्व आधुनिक नेपाली साहित्य क. आधुनिक नेपाली निबन्ध-५० ख. नेपाली आत्रा साहित्य-२५ ग. अन्य साहित्य-२५	नेपाली ४२३	१००
आधुनिक नेपाली निबन्ध, यात्रासाहित्य र अन्य साहित्य	नेपाली ४२४	१००

बी. ए. तेस्रो वर्ष नेपाली विषयको पाठ्यक्रमको रूपरेखा (ऐच्छिक पत्र दुई समूह बाट एक मात्र)

पाठ्यांश शीर्षक	पत्र संकेत	अङ्कभार
समूह १ प्रायोगिक कार्यात्मक विशेष अध्ययन क. शोधपत्र-५०, ख. सिर्जनात्मक पत्र-५० ग. नेपाली वाक्कला-५०	नेपाली ४२५	१००
समूह २ विधागत विशेष अध्ययन घ. आधुनिक नेपाली कविताको उत्तरवर्ती चरण २०३६ पछि-५० ङ. आधुनिक नेपाली आख्यानको उत्तरवर्ती चरण-५० च. आधुनिक नेपाली नाटकको उत्तरवर्ती चरण-५० छ. आधुनिक नेपाली सनवन्ध र अन्य साहित्यको उत्तरवर्ती चरण-५० ज. नेपाली बालसाहित्यको अध्ययन-५०	नेपाली ४२५	१००

बी. ए. चौथो वर्ष नेपाली विषयको पाठ्यक्रमको रूपरेखा

पाठ्यांश शीर्षक	पत्र संकेत	अङ्कभार
भाषा विज्ञान र नेपाली भाषा	नेपाली ४२६	५०
आधुनिक नेपाली गीत तथा गजल	नेपाली ४२६	५०
साहित्य सिद्धान्त, नेपाली समालोचना र शोधविधि क. साहित्य सिद्धान्त -५० ख. नेपाली समालोचना -२५ ग. शोधविधि तथा प्राज्ञिक लेखन २५	नेपाली ४२७	१००
नेपाली पत्रकारीता शैद्धान्तिक तथा कार्यमूलक पत्र(नेपाली कूल विषय नलिने विद्यार्थीकालागि मात्र)	नेपाली ४१०	१००



Grade XI&XII Science/Management

Eligibility Criteria for Grade XI Science

1. At least GPA 2.0 in aggregate in SEE Board, or equivalent is the primary requirement for admission.
2. Grade C+ in Science and Mathematics and D+ in English, Social Studies and Nepali are additional requirement to be eligible to study Grade XI Science.
3. School Character Certificate needs to be submitted.
4. Students must have passed entrance test administered by the campus.

+2 SCIENCE	Class-11	Subject	Code	Full Marks
		Compulsory English	002	100
		Physics	110	100
		Chemistry	112	100
		Biology	114	100
		Mathematics	116	100
	Class-12	Subject	Code	Full Marks
		Compulsory Nepali	006	100
		Compulsory English	004	100
		Physics	210	100
		Chemistry	212	100
		Biology	214	100
		Mathematics	216	100

Eligibility Criteria for Grade XI Management

(Accountancy, Economics, Business Studies, Computer Science)

1. At least GPA 1.6 in aggregate in SEE Board, or equivalent is the primary requirement for admission.
2. Grade D+ in English, Nepali, Social Studies, Mathematics and Science are additional requirement to be eligible for admission.
3. School Character Certificate needs to be submitted.
4. Students must have passed entrance test administered by the campus.

+2 MANAGEMENT	Class-11	Subject	Code	Full Marks
		Compulsory English	002	100
		C. Nepali	003	100
		Economics	126	100
		Business studies	328	100
		Accountancy	124	100
	Class-12	Computer science	130	100
		Subject	Code	Full Marks
		Com. English	004	100
		Economics	226	100
		Business studies	628	100
		Com. Science	230	100
		Accountancy	224	100
		Marketing	910	100
		Business mathematics	908	100



Grade XI&XII Education / Humanities

Eligibility Criteria for Grade XI Education and Humanities (Specialization in: English, Nepali, and Health Education)

1. At least GPA 1.6 in aggregate in SEE Board, or equivalent is the primary requirement for admission.
2. Grade-D+ in English, Nepali, Social Studies are additional requirement to be eligible for admission .
3. School Character Certificate needs to be submitted .
4. Students must have passed entrance test administered by the campus.

+2 EDUCATION		Class-11
Subject	Code	Full Marks
Compulsory English	002	100
Compulsory Nepali	003	100
Intro. to Edu.	134	50
Instructional Pedagogy	136	50
Population Studies	146	100
Opt. English	120	100
Opt. Economics	126	100
Opt. Mathematics	116	100
Opt. Nepali	132	100
Opt. HPE	144	100

+2 EDUCATION		Class-12
Subject	Code	Full Marks
Compulsory English	004	100
Compulsory Nepali	003	100
Child Dev. & Learning	902	100
Teaching Practice (Practicum)	920	50
Instructional Evaluation	918	50
Opt. Population Studies	246	100
Opt. English	220	100
Opt. Economics	226	100
Opt. Mathematics	216	100
Opt. Nepali	232	100
Opt. HPE	244	100

One subject only

+2 Humanities		Class-11
Subject	Code	Full Marks
Compulsory English	002	100
Compulsory Nepali	003	100
Opt. Population Studies	146	100
Opt. English	120	100
Opt. Economics	126	100
Opt. Mathematics	116	100
Opt. Nepali	132	100
Opt. HPE	144	100

3 subjects only

+2 Humanities		Class-12
Subject	Code	Full Marks
Compulsory English	004	100
Compulsory Nepali	003	100
Opt. Sociology		100
Opt. Population Studies	246	100
Opt. English	220	100
Opt. Economics	226	100
Opt. Mathematics	216	100
Opt. Nepali	232	100
Opt. HPE	244	100

3 subjects only



Student Facilities in the Campus

A: Freeship facilities:

6% of the total enrolled students will receive freeship facility as per the selection procedure applied by the campus. This facility will be equivalent to the total amount of tuition fee of eleven months (in annual system). This facility is applicable year-wise to the students enrolled for **B.Ed., BBS, B.Sc. and BA.**

B: Scholarship Facilities:

1. **Entrance test-based scholarship:** Entrance test topper/s (a boy and a girl) will be provided scholarship as per the provision made in the SMC scholarship guidelines.
2. **Final exam result-based scholarship:** One student from each faculty will receive this scholarship equivalent to the amount of the total tuition fee of 11 months. This scholarship is applicable only if the minimum number of students enrolled in the cohort is 40.
3. **Recommendation-based government funded scholarship:** This scholarship is based on the recommendation of the campus but the students receive it externally.
4. **Individual & Support Agency-based scholarship:** This scholarship will be provided to the students from the interest of the money deposited in the fixed account created by the individuals and agencies for scholarship support. The facility amount and the number of students receiving it will be decided in terms of the campus scholarship guidelines.
5. **BBA Specific scholarship:** (a) Two students (a boy and a girl) selected as per the **merit cum poverty criterion** from a section enrolled under this program will receive this scholarship equivalent to 50% of a semester tuition fee. This facility is offered only to those students who completed their school education (**SEE & +2**) from the community schools/community campuses. (b) 3 top grade

scorers (ranked in order) in the final semester examination will also receive scholarship. Based on the score merit, the amount can have variation as per the scholarship guidelines of the campus.

C: Library Facilities:

1. **Central library facilities:** Each student admitted at B.Ed., BBS, B.Ed. ICT, BA, B.Sc, and M.Ed. will be provided two books from the library.
2. **Open access facility:** Each student will have open access for selecting books from the library.
3. **Reading facility in the reading rooms:** Student can take reading materials of their choice from the library and enjoy reading obeying library codes of conduct of the reading rooms.
4. **Research focus/RMC library facility:** Both students and teachers intending to carry out research can read books of the Research Management Cell Library. They can also use internet connected computers for browsing for material search.
5. **Non-student facility:** Non-admitted students/ students from other institutions and people in community can also use the library facility of the campus with the recommendation of the campus administration.
6. **Department library facility:** Each department has its own department library. Students of the concerned department can borrow books conditionally relevant to their study from this library too.
7. **E-library and E-Copy facility:** Students can visit e-library to browse materials from the internet. Relevant to their study, they can also transfer files from the computer centers and from the RMC.

D: Lab Facilities:

- Students studying under the faculty of science and technology will have facility of using lab

equipments in the guidance of the teacher and the presence of the lab assistant.

- Students studying computer science, BBA and ICTE will have facility of using computers available in the computer labs in the guidance and presence of the teachers.

E: Transportation:

- One way transportation facility is offered to the students from **Sunsari-Ithari** in the west and from **Morang-Kanepokhari** in the East.

- F: Prize and Felicitation:** Students scoring higher grades in the internal tests and in the final examination will be awarded prizes along with an appropriate felicitation.

Campus Codes

1. The students are requested to come to college with the defined uniform.
2. Students must have come with student identity card.
3. Students are supposed to obey the library rules and regulations for borrowing and returning the books from the library.
4. Laboratory rules and regulations must be obeyed by the students.
5. Students should have genuine discipline characters during their study.
6. The students must have full preparation to participate in the practical, practice teaching, practicum, report and thesis writing before they sit in the viva-voce.
7. Students must have taken library clearance before they receive the campus certificate.
8. Keeping campus equipments safe, keeping campus atmosphere peaceful, making garden, flora and fauna safe, clean and green shall be considered as implicit duties of the students.
9. Regulation of parking vehicles and transportation are obligatory.

Chair of Students' Union

I am absolutely glad to express my pleasures that Sukuna Multiple Campus, from its beginning has made an outstanding progress for the holistic development of students and institution. Our campus is such an arena where every student come out achieving something to earn worthy livelihood. From the side of Chair of Students' Union, I assure that the campus will be the thread in the wax to illuminate the student life.

In the comparison to other campuses, this campus has provided the facilities of free ship and scholarship adequately to the students based on various criteria. I feel proud myself being the students of such a reputed campus in Nepal. QAA certificate blossoms the excellence of this campus.

As being chair of the students' union I welcome all the students from the every sides of Nepal and also join hands to all the prospective students and guardians to make a choice to this campus where every students will prepare their bright future.



Santosh Limbu
Chairman
Free Student Union(FSU)



Teaching & Non-Teaching Staff of Sukuna Multiple Campus



Who to Contact?

S.N.	Name	Purpose	Telephone No	Email Address	Designation
1	Chandra Mani Rai	General (ALL)	9852045617	kanchhabanu@yahoo.com, sukunac@yahoo.com	Campus Chief
2	Keshav Raj Bhattarai	Evening Shift -cademic program	9842479920	keshabhattacharai66@yahoo.com	Assist. Campus Chief
3	Arjun Raj Adhikari	+ Morn. Shift academic program	9852056749	arjunsd8@gmail.com	Assist. Campus Chief
4	Megh Narayan Shrestha	+2 (Day Shift) academic program	9842027389	meghnarayanashrestha@gmail.com	Assist. Campus Chief
5	Balaram Pokhrel	Management	9842091238	pokharelbalaram2027@gmail.com	Coordinator
6	Prem Bahadur Tamang	Mathematics	9842145666	prem_tamang58@yahoo.com	HoD
7	Sukdal Limbu	Social Edu. Department	9842058625	slsukdal@gmail.com	HoD
8	Umanath Bhattarai	Nepali Department	9842089265	tikanath.tulasa2017@gmail.com	HoD
9	Guru Pd. Adhikari	English Department	9842021027	gurusirsukuna@yahoo.com	HoD
10	Jandardan Guragain	Health + Pop Department	9852059551	jguragain69@gmail.com	HoD
11	Indra Timsina (IT)	B.Sc. Science Program	9842080184	indratimsina90@gmail	Coordinator
12	K.P. Acharya	BBA Program	9852055208	acharyakp.kpa@gmail.com	Director
13	Bidur Subedi	Teaching practice	9842167970	bsubedi60@yahoo.com	HoD
14	Ganesh Pd. Dahal	Research	9852041535	gpdahal222@gmail.com, gpddahal@yahoo.com	Coordinator
15	N.P. Bhandari	Quality Assurance Accreditation (QAA) & Self-Assessment Team (SAT)	9842572605	np.bhandari@yahoo.com, bhandarinp2028@gmail.com	Coordinator
16	Harka Bdr. Gurung	+ Science	9862014591	rodhiratna90@gmail.com	HoD
16	Atul Bhattarai	ICT	9842120960	atulbhattarai.smc@gmail.com	Focal Person
17	Basu Dev Dahal	Tracer Study	9842083445	basudevdaahal83@gmail.com	Coordinator
18	Devi Pd. Gautam	Administration	9852041541	sukunamc2048@gmail.com	Admin. Head
19	Surya Pd. Adhikari	Examination	9852054481	sukunaexam@gmail.com	Section Head
20	Dev Raj Giri	Library	9842030538	giri2devraj@gmail.com	Section Head
21	Bikash Adhikari	Science Lab	9842139214	bkasadhikari@gmail.com	
22	Yubraj Subedi	Account	9842176187	sukunamc2048@gmail.com	Section Asist.
23	Santosh Limbu	Free Student Union (FSU)	9842504843		President
24	Dipak Rai	Student Quality Circle	9862063029	dipakdikhalichharai@gmail.com	Coordinator